



**ENDUROFENCE**  
LONG LASTING FENCING PANELS

**ENDUROS**MART  
MAINTENANCE FREE FENCING



Will Never Rot  
Retro fitting panel swap  
Guaranteed for 25 years  
Full installation available

0800 1185 656

**British Owned** Manufacturing Company



# maintenance free fencing solutions

Looking for a stylish and low-maintenance alternative to traditional wooden garden fencing? Consider our Endurofence Smart range - a modern flat-pack metal fencing system that's easy to install and built to last.

Made from high-quality, durable steel, this sturdy fencing solution requires no maintenance and can be assembled in just minutes.

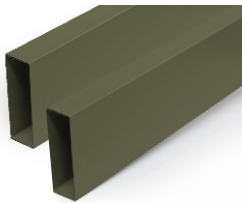
Say goodbye to old, weathered wooden panels and hello to a sleek, long-lasting garden fence with EnduroSmart.



## EnduroSmart Panel Pack

Each fence panel box contains 5 X steel PVC coated infill sections, 1 x finishing rail, 2 x channel adapters and 1 x screw pack. No more painting old wooden fence panels for 25 years or more! This DIY system is flat-packed to ease transport. One box will make 5ft H x 6ft W, 1500mm H x 1800mm W. (55mm).

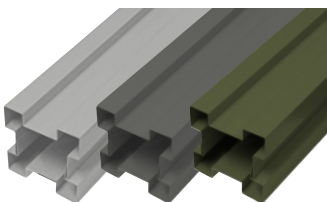
Colour	Code
<input checked="" type="radio"/> Merlin	SMFPM
<input checked="" type="radio"/> Goosewing	SMFPG
<input checked="" type="radio"/> Anthracite	SMFPA
<input checked="" type="radio"/> Olive	SMFPO



## EnduroSmart Plinth Pack

EnduroSmart plinth box contains two steel PVC-coated plinths (48mm W x 150mm H x 1795mm L) - a lightweight alternative to concrete gravel boards. These plinths are maintenance-free, come with a 25-year guarantee, and are wind/weatherproof.

Colour	Code
<input checked="" type="radio"/> Merlin	SMPPM
<input checked="" type="radio"/> Goosewing	SMPPG
<input checked="" type="radio"/> Anthracite	SMPPA
<input checked="" type="radio"/> Olive	SMPPO



## EnduroPost Gen2 Cover

The Gen2 BS cover measures 1.9m and features an H-groove on all sides, making it suitable for use as a corner post. It is designed to be used with PP1.25 or BS2.

Colour	Code
<input checked="" type="radio"/> Merlin	SMGEN2M
<input checked="" type="radio"/> Goosewing	SMGEN2G
<input checked="" type="radio"/> Anthracite	SMGEN2A
<input checked="" type="radio"/> Olive	SMGEN2O



## Steel Galvanised Post

One of the essential components needed to install the EnduroPost Gen2 onto concrete or soil is a Galvanised box section measuring 80x80x2.5 mm and having a length of 1.875m. This post provides the support and stability required to securely mount the EnduroPost Gen2, ensuring its long-lasting performance and durability.

Colour	Code
<input type="radio"/> N/A	BS2



## Post Plate Bracket

This bracket is made of a galvanized 1.25-meter box section (80x80x2.5mm) with a welded plate designed for securing posts onto concrete surfaces. (EnduroPost Gen2 Cover not provided). The maximum height supported is 1.8 meters; bolts are not supplied.

Colour	Code
<input type="radio"/> N/A	PP1.25

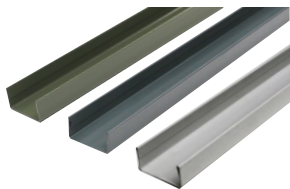


# compose your fence with our parts catalogue

Transform your old fence into an eye-catching garden or patio backdrop with our EnduroSmart fencing system. This versatile set of elements effortlessly combines with concrete slotted posts or any other slotted posts of your choice to create a stunning new fence.

In this catalogue brochure, you'll discover all the necessary components available in several popular colours, along with detailed instructions and assembly examples to help you quickly build a long-lasting perimeter.

Say goodbye to the hassle of year-to-year wood fence treatments, as EnduroSmart is designed to outlive any alternative.



## Enduro Universal Channel

This U-shaped channel can be fixed to a flat surface, and onto concrete Post Covers 1830mm long can be cut to size.

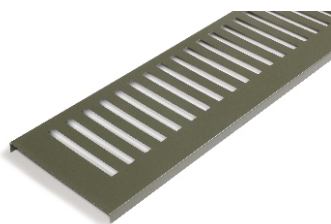
Colour	Code
Merlin	SMUM1.83
Goosewing	SMUG1.83
Anthracite	SMUA1.83
Olive	SMUO1.83



## EnduroCap

The post cap comes with a set of two screws. We have designed it to fit perfectly onto the Concrete Post Cover and GEN2 Cover. With its durable construction and easy installation, the post cap finishes off the fence nicely, ensuring it remains sturdy and secure for years to come.

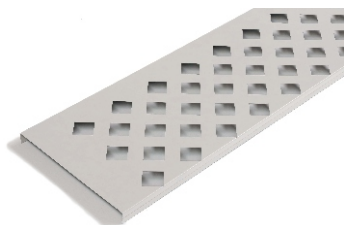
Colour	Code
Merlin	SMCAPM
Goosewing	SMCAPG
Anthracite	SMCAPA
Olive	SMCAPO



## EnduroTrellis - Slots

Boost your fence look with EnduroTrellis. This innovative solution replaces the top infill section of your fence, fitting seamlessly into slots to give it a softer and more stylish look. Choose from 4 colours to complement your fence panel. It measures 300mm x 1780mm and adds elegance to your outdoor space.

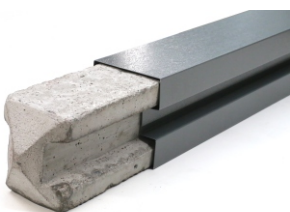
Colour	Code
Merlin	SMTMS
Goosewing	SMTGS
Anthracite	SMTAS
Olive	SMTOS



## EnduroTrellis - Diamonds

Enhance the beauty of your fence panel by replacing the top infill section. With 5 different colours to choose from, you can easily create a unique look that complements your existing fence panel. The EnduroTrellis in Diamonds measures 300mm x 1780mm, and will add a touch of elegance and sophistication to your outdoor space.

Colour	Code
Merlin	SMTMD
Goosewing	SMTGD
Anthracite	SMTAD
Olive	SMTOD
Buttermilk	SMTBD



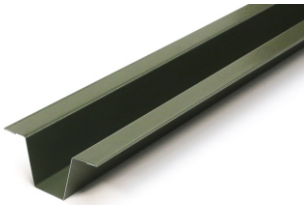
## Enduro Post Cover

The 1.9m concrete post cover fits standard concrete H-Posts and is available in four colours to match fence panels. It never needs painting and can be cut to size. Enduro Cap is sold separately.

Colour	Code
Merlin	SMPCM1.9
Goosewing	SMPCG1.9
Anthracite	SMPCA1.9
Olive	SMPCO1.9











## Enduro Surface Bracket





You can use this bracket to install the EnduroSmart panel and plinths on a flat surface. This bracket can be used to mount the EnduroSmart on one side of an H-Post or wall without removing the existing wooden panel. It is available in EnduroFence matching colours and has a length of 1.83 inches (55mm).

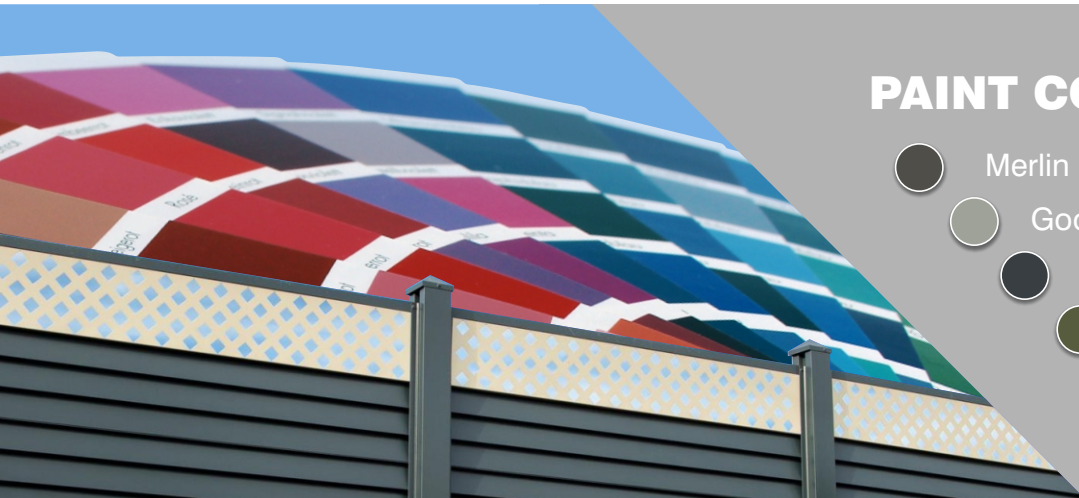
Colour	Code
 Merlin	SMFSBM
 Goosewing	SMFSBG
 Anthracite	SMFSBA
 Olive	SMFSBO



## Enduro Channel Adapters

To extend the height of the EnduroSmart fence, you can use the 300mm Channel Adapter. It is designed to fit into the groove of the H-Post, and it comes in 4 different colours. The adapter is 300mm long, with a width of 55mm, and the box contains 12 pieces. Place the adapter at the bottom of your H-Groove to use it.

Colour	Code
 Merlin	SMCM.300
 Goosewing	SMCG.300
 Anthracite	SMCA.300
 Olive	SMCO.300



## PAINT COLOUR CODES

-  Merlin Grey - BS 18B25
-  Goosewing Grey - BS 10A05
-  Anthracite Grey - RAL 7016
-  Olive Green - BS 12B27

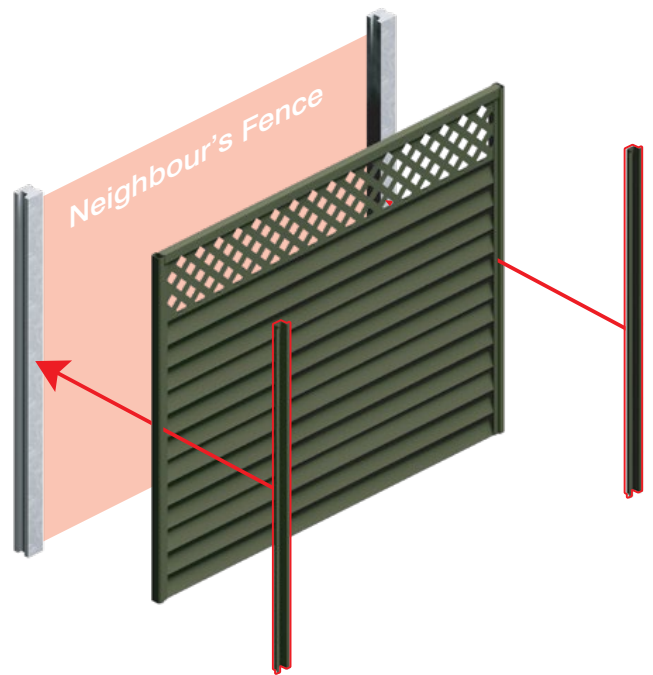


# EnduroSmart Surface Bracket

The EnduroSmart Surface Facing Bracket offers a solution to a common problem faced by homeowners in housing developments.

With this innovative bracket, you can now fence both sides of your garden without interfering with your closest neighbors and create a peaceful and private outdoor sanctuary. Furthermore, this versatile bracket can even be used to enhance the appearance of your outdoor space by cladding a wall or unsightly garden shed.

With EnduroSmart Surface Facing Bracket, you can transform your outdoor space into the tranquil oasis of your dreams.



**BEFORE**



**AFTER**







## Infill Section

The EnduroSmart panel box is made of an infill section and is available in a shiplap design in four colours, measuring 300mm x 1780mm.

Colour	Code
● Merlin	KILM
● Goosewing	KILG
● Anthracite	KILA
● Olive	KILO



## Top Finishing Rail

The EnduroSmart panel's top section boasts a sturdy, sleek, 1780mm finishing rail that is securely attached with four screws. This finishing rail adds a professional touch and extra durability to your EnduroSmart panel.

Colour	Code
● Merlin	SMFRM
● Goosewing	SMFRG
● Anthracite	SMFRA
● Olive	SMFRO



## Channel Adapter

The Channel Adapter is 1530mm long and fits into the H-Post's groove. It's available in four colours and can be cut to size.

Colour	Code
● Merlin	SMCM1.5
● Goosewing	SMCG1.5
● Anthracite	SMCA1.5
● Olive	SMCO1.5



## Screw Pack

The Screw Pack comprises six concrete screws and six coloured tex screws, and it is obtainable in four diverse colours

Colour	Code
● Merlin	SPM
● Goosewing	SPG
● Anthracite	SPA
● Olive	SPO

# build your fence in few easy steps

*"When you divide the cost of your fence over its 25-year lifetime, its fantastic value and we never have to paint it. Brilliant!"*

- The EnduroSmart is ideal for the DIY/Handyman or General builder.
- Install posts (SmartPosts, Gen2 or concrete H-Posts) into the concrete foundation as usual.
- Fit the lightweight plinths (Pic 1, 2, 3)
- Fix Channel adapters to H Groves ( Pic 4)
- Slide the EnduroSmart Infill sections into place (Pic5)
- Fix the Top finishing rail using the coloured screws ( Pic6, 7)
- Wash down the fence and enjoy the next 25 years!



**GUARANTEED  
FOR 25 YEARS**



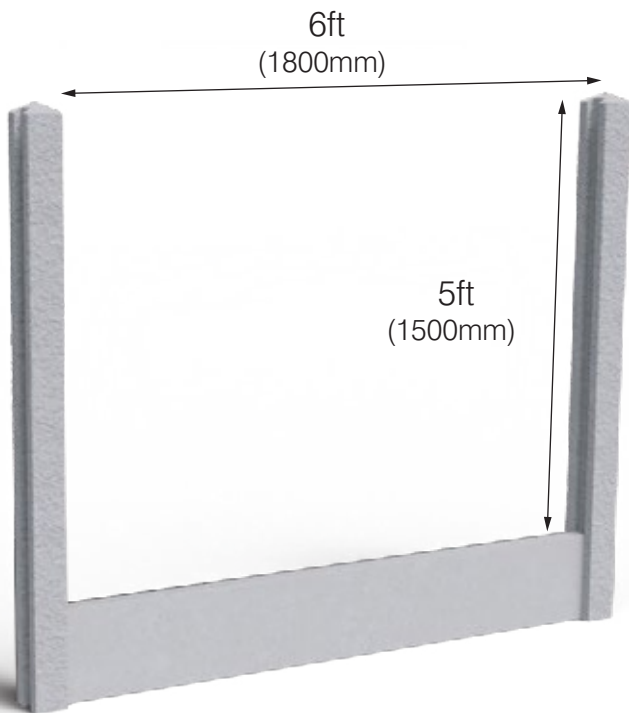
**NO PAINTING  
OR TREATING**



**TOUGH AND  
HARD-WEARING**



# if you have concrete posts and gravel board



## You Need

1 x EnduroSmart Panel Pack



EnduroSmart Panel Pack with concrete posts and concrete gravel board.

EnduroSmart offers coloured concrete post covers and a retrofit system that can be easily fitted into existing concrete H-posts or on top of concrete gravelboards. Additionally, the EnduroSmart fence panels can be cut to fit narrow openings that are less than 6ft/1800mm wide.

\*Please note that it is not recommended to cut EnduroSmart with a grinder.



EnduroSmart Panel Pack and Buttermilk Diamond Trellis with concrete posts and concrete gravel board.

## To Add Trellis

1 x EnduroSmart Panel Pack

1 x EnduroSmart Trellis:

If you want to add a trellis to a fence opening that measures 5ft (1500mm), you only have to use four of the five infill sections included in the EnduroSmart Panel Pack for each opening. You can use the leftover infill sections for the next opening, but you must purchase an additional kit.

For every five openings, you need:

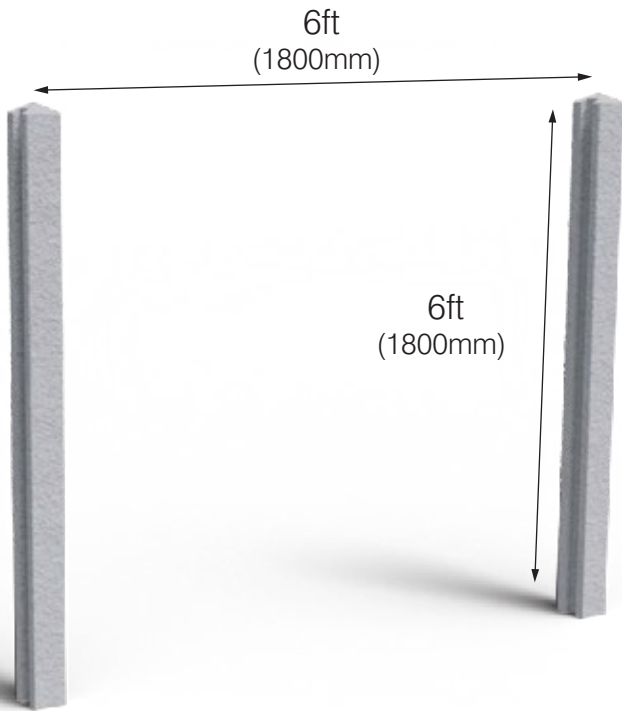
- 4 x EnduroSmart Panels
- 5 x Trellis
- 1 x Kit

Note: Add one complete post at the end of your fence.

(10 panels will need 11 posts)



if you have  
concrete posts



## You Need

- 1 x EnduroSmart Panel Pack
- 1 x EnduroSmart Plinth Pack



EnduroSmart Panel Pack with EnduroSmart Plinth Pack.

Coloured concrete post covers are available, and EnduroSmart is a retrofit system that can fit into existing concrete H-posts. EnduroSmart fence panels can be easily cut to fit narrow sections less than 6ft/1800mm in width.

\*Please note that it is not recommended to cut EnduroSmart with a grinder.

## To Add Trellis

- 1 x EnduroSmart Panel Pack
- 1 x EnduroSmart Trellis
- 2 x 300mm Channel Adapters



EnduroSmart Panel Pack and Buttermilk Diamond Trellis with

To add a trellis to a 6ft/1800mm EnduroSmart panel, 300mm Channel Adapters are required to extend the channels included with the EnduroSmart Panel Pack.

## To Add Trellis and Plinth

- 1 x EnduroSmart Panel Pack
- 1 x EnduroSmart Plinth Pack
- 1 x EnduroSmart Trellis

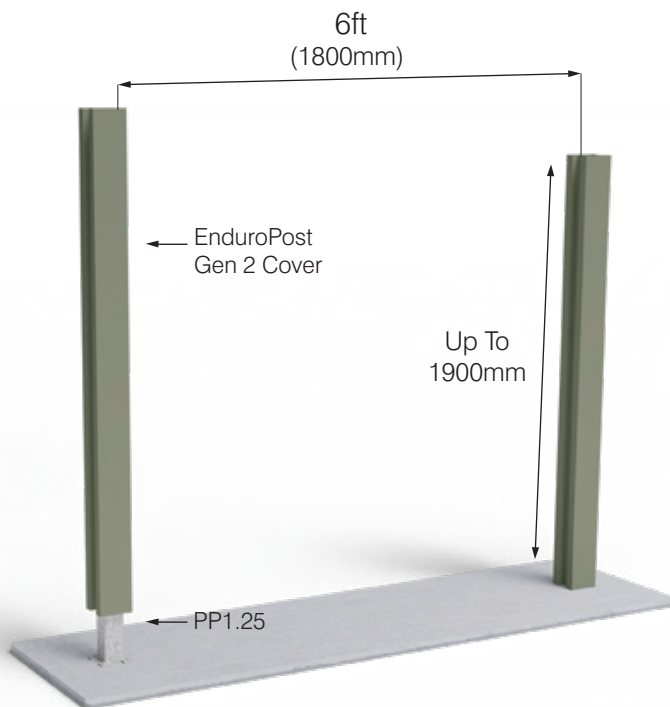


EnduroSmart Panel Pack and Buttermilk Diamond Trellis with EnduroSmart Plinth Pack

Note: Add one complete post at the end of your fence. (10 panels will need 11 posts)



# if you building a new fence enduro posts bolted to concrete



EnduroSmart empowers you to create a sturdy and reliable fence installation on a concrete foundation. You can achieve a secure and resilient fence setup with our EnduroPost Gen2 Cover and a galvanised steel post with a mounting plate (1250mm tall PP 1.25).

The adjustable cover, which can be cut to fit your desired length, and flexible fence panels that can be cut to fit narrow sections less than 6ft/1800mm in width allow you to design and create the perfect fence for your specific needs.

Let EnduroSmart help you confidently and quickly bring your fence installation ideas to life.

## You Need

- 1 x EnduroSmart Panel Pack
- 1 x EnduroSmart Plinth Pack
- 1 x SmartPost Gen2 Cover
- 1 x Post Plate Bracket (PP1.25)
- 1 x SmartCap

## To Add Trellis With Plinth

- 1 x EnduroSmart Plinth Pack
- 1 x EnduroSmart Plinth Trellis
- 1 x SmartPost Gen2 Cover
- 1 x Post Plate Bracket (PP1.25)
- 1 x SmartCap



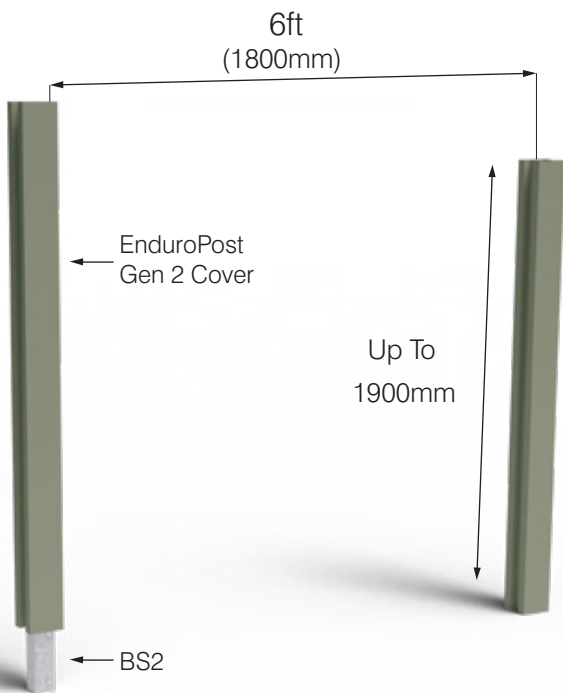
EnduroSmart Panel Pack with  
EnduroPost Gen2 Cover and Post Plate Brackets.



EnduroSmart Panel Pack with  
EnduroPost Gen2 Cover and Post Plate Brackets,  
and Buttermilk Diamond Trellis



# if you are building a new steel fence enduro posts set in post mix



## You Need

- 1 x EnduroSmart Panel Pack
- 1 x EnduroSmart Plinth Pack
- 1 x EnduroPost Gen2 Cover
- 1 x Steel Galvanised Post (BS2)
- 1 x SmartCap



EnduroSmart Panel Pack with Plinth Pack & EnduroPost Gen2 Cover and Galvanised Steel Post.

EnduroSmart is compatible with our Galvanised Steel Posts (1875mm in length), which are installed into the ground at a depth of 600mm and set with post mix. The Posts are concealed with a SmartPost Gen 2 Cover EnduroSmart that is 1900mm long, and can be adjusted by cutting it to the desired length. EnduroSmart panels can be tailored to fit any narrow sections that are less than 6ft/1800mm in width.

\*Please note that it is not recommended to cut EnduroSmart with a grinder.

## Solid Panel

- 2 x EnduroSmart Panel Boxes
- 1 x SmartPost Gen2 Cover
- 1 x Steel Galvanised Post (BS2)
- 1 X SmartCap



EnduroSmart Panel Pack with EnduroPost Gen2 Cover and Galvanised Steel Post

Parts from an extra panel box can be used to extend the 1.5m high to 1.8m high.  
E.g. five openings will require six boxes to make 1.8m x 1.8m solid panel

## Trellis Without Plinth

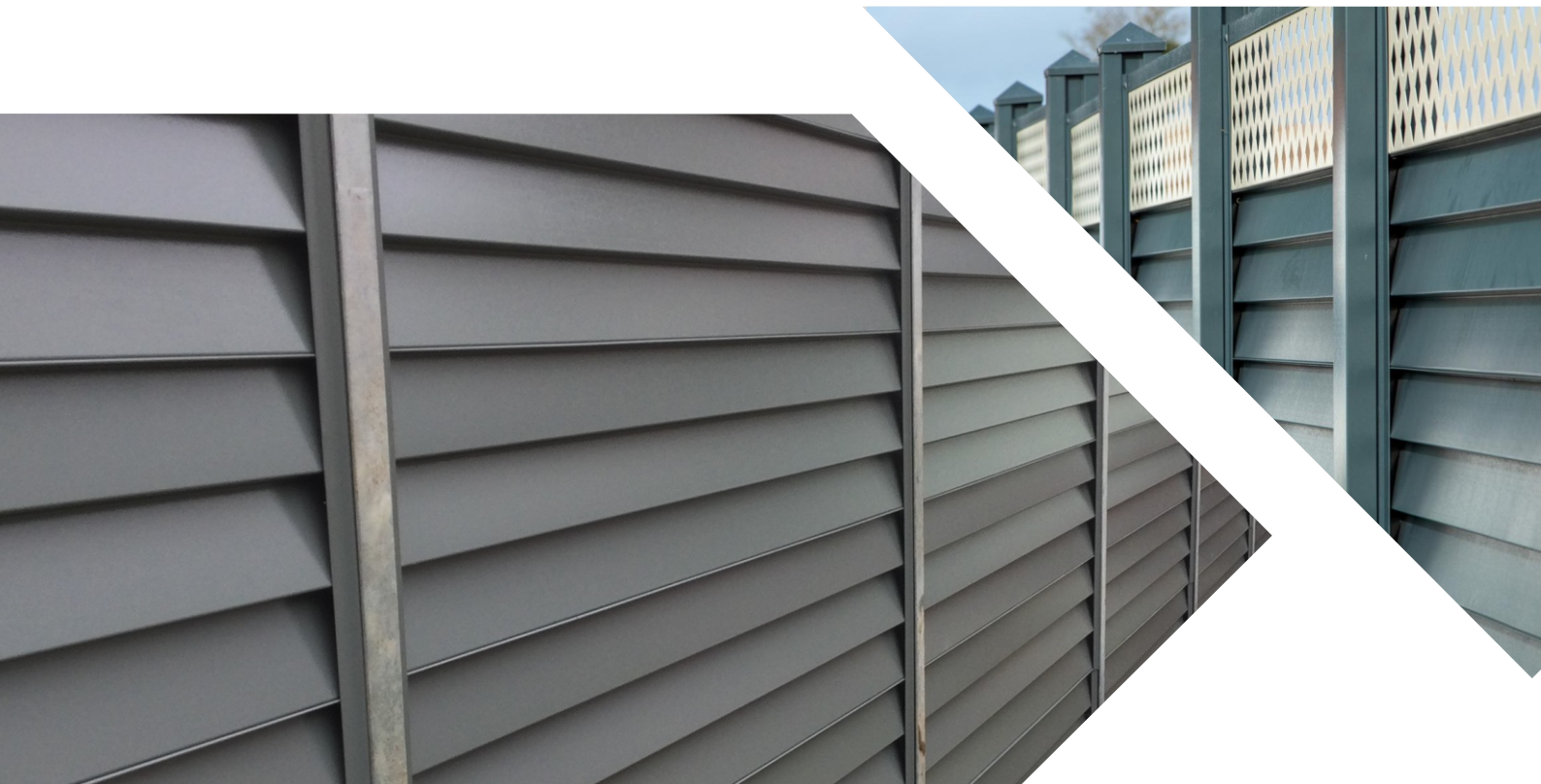
- 1 x EnduroSmart Panel Pack
- 1 x EnduroSmart Trellis
- 1 x SmartPost Gen2 Cover
- 1 x Smart Cap
- 1 x Steel Galvanised Post (BS2)
- 2 x Chanel Adapters 300mm



EnduroFence Panel Pack with EnduroPost Gen2 Cover and Galvanised Steel Post, and Buttermilk Diamond Trellis.

Note: Add one complete post at the end of your fence. (10 panels will need 11 posts)





see the complete range  
scan the code...